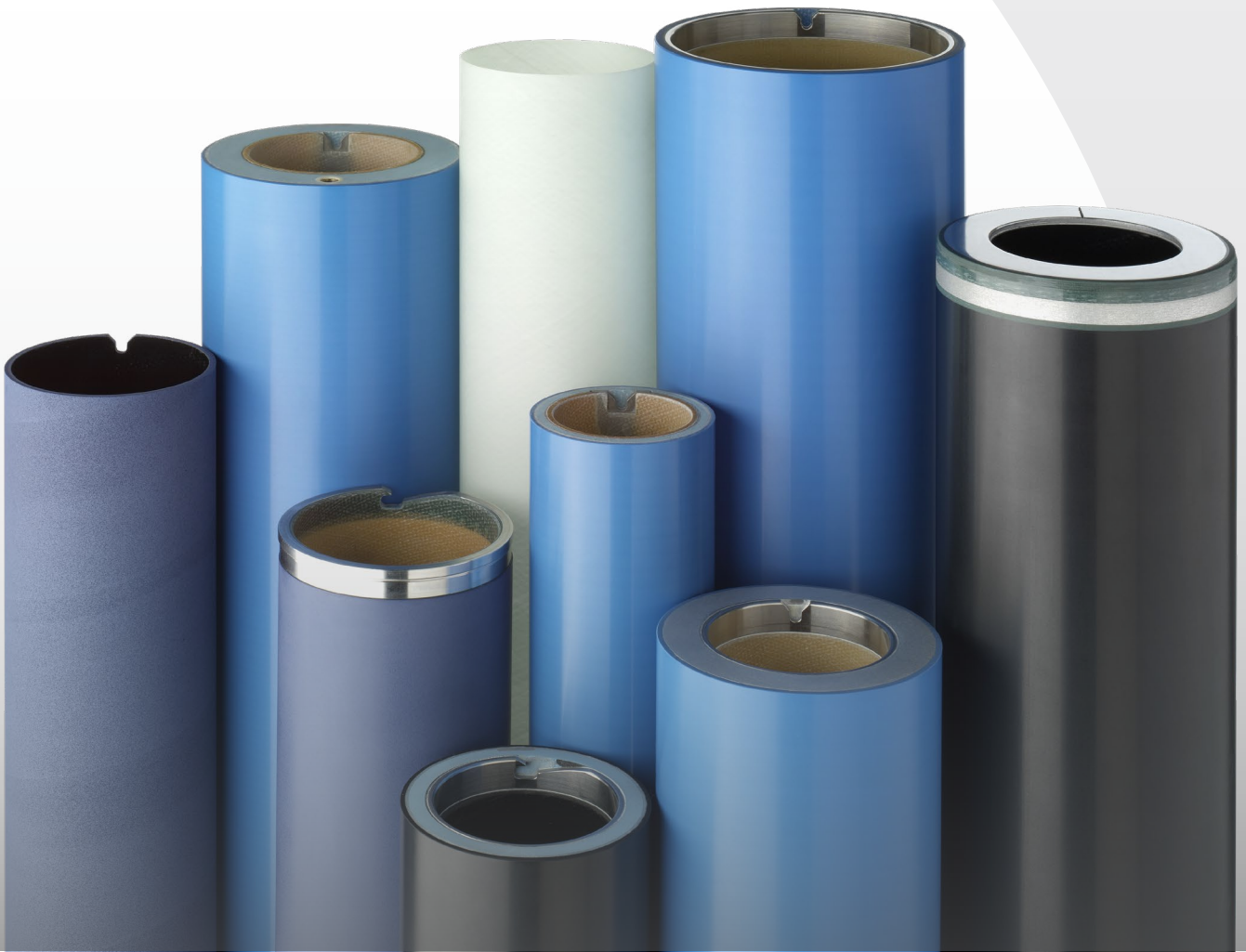


Rely on us.SM



Customised Solutions for Sleeves and Adapters

**rotec[®] sleeves and adapters for
flexographic printing**

FlintGroup



rotec® Sleeves & Adapters for Flexographic Printing

Flint Group manufactures rotec® sleeves and adapters customised for all flexo printing presses, as well as several specialty applications.

A Committed Team

Standing behind our quality products is also a strong team listening to our customers in order to provide innovative solutions and reliable service. Our commitment towards our customers to continuously improve our products and services drives our objective of making our products and services **better, faster and easier to use.**

Extensive Experience

rotec® sleeves and adapters have been in use around the world since 1990, with state-of-the-art, quality production facilities in Germany and the United States. Through innovations and a continuous improvement process of sleeve and adapter technology, cost efficiency, service and ecological responsibility, rotec® sleeves and adapters became the number one in terms of effectiveness, reliability and convenience in daily practice.

Customised Solutions

Every single printing sleeve and adapter is **tailor-made according to your needs.** You can choose between various rotec® sleeves, depending on your application needs. In addition, you can build your own customised adapter from the choice of base materials, air distribution systems, and air source, specific to your individual press operation. And, with a selection of quality upgrade options, you can further design the optimal sleeve or adapter for your individual requirements.



Technical Solution Provider

At Flint Group, we utilize our vast global market intelligence combined with technical expertise to provide **market-oriented and innovative solutions**. Whether customer service, sales, or production, empowered people are our greatest asset. This enables our customers to better position themselves to address present and future emerging market realities.

The rotec® product line is ever expanding in an effort to provide customers with the solutions they need. With **new product developments**, customers can significantly improve print performance, press productivity, as well as operator health and safety.

A perfect example is the **innovative rotec® Eco Bridge** air distribution option for adapters. Instead of air holes, a breathable metal ring at the operator side creates an air pillow to allow easy and fast mounting of sleeves.



Flint Group listens to the customer in an effort to provide innovative solutions and optimized operations.

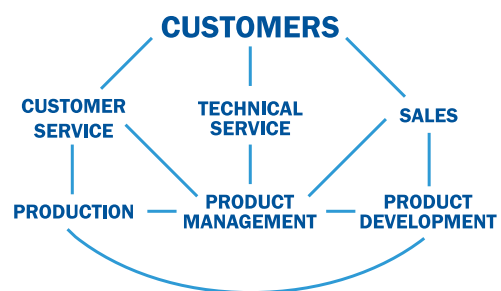
Dedicated Product Development

With diverse backgrounds in material science, physics, and mechanical engineering, the Flint Group sleeves and adapters product development team has a fresh perspective on the construction of sleeves and adapters. Based out of the Technology Center in Ahaus, Germany, their energy and enthusiasm for out-of-the-box thinking has contributed to the thriving stream of new products now available to the market.



At rotec®, we always strive for the best possible way to develop innovative and state-of-the-art products.

Our product development team is using the momentum of these products and continuing to intensively develop real solutions focused on what is important and relative to the flexo market.



At Flint Group, we listen to our customers and through several pathways of communication back to a strong technology development team, make the solutions for the flexographic press a reality.



“

Our Product Development Team is focused on developing products to help the customer work smarter, faster and easier. The rotec® Smart Premium Sleeve, for example, is an excellent solution for improved efficiency and easier handling at the printer.

*- Uwe Müller, Flint Group,
Quality and Product Development Manager*



rotec® Sleeves

rotec® sleeves are high-quality sleeves to be used for conventional flexo plate-mounting, as well as other speciality applications. They allow plate-mounting outside the press and can be combined with various adapters.

- Easy and reliable handling with all plate types
- Tight tolerances with high-precision grinding (TIR < 0.02 mm) and length according to DIN ISO 2768 T1c
- Proven rotec® interior design of synthetic resin and glassfibre compound to ensure long-lasting and consistent mounting characteristics
- High durability and stability
- Special sizes for wall thickness and length options available upon request

	Wall thickness				
rotec® Blue Light Sleeve	0.9 mm - 125 mm				Ω
rotec® Smart Sleeve	7.5 mm - 125 mm	✓	✓	⚙️	Ω
rotec® Smart Premium Sleeve	7.5 mm - 125 mm	☂️	✓	✓	Ω
rotec® Lightweight Premium	30 mm - 125 mm	☂️	✓		Ω
rotec® Compressible Sleeve	2.9 mm - 125 mm			⬇️	Ω
rotec® Offset Sleeve	14.5 mm - 125 mm	☂️			
rotec® Base Sleeve	0.8 mm - 2.2 mm		✓		Ω
rotec® Cover Sleeve	0.8 mm		✓		



Superior Dimensional Stability:

These products provide superior dimensional stability because the sleeve construction includes an additional glassfibre barrier layer to prevent any growth.



Lightweight:

These products are an advantage for the press operator by being easier to handle. This comes from reduced weight and easier mounting properties.



Easy-mount Technology:

New easy-mount technology was developed for these products using advanced materials and state-of-the-art sleeve construction to make mounting easier for the press operator.



High Speed:

These products are ideal for high-speed press applications because the construction and materials of these sleeves provide bounce reduction properties.



Compressible:

These products have a compressible outer surface for optimized printability.

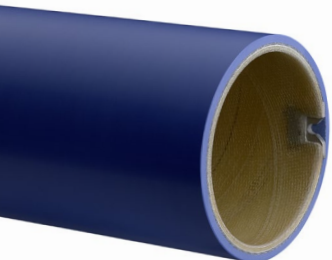


Conductive Option:

Available with rotec® Ω Technology that provides complete conductivity from the base sleeve through to the surface. See upgrade section for more information.

Choose Your Own rotec® Sleeve

Every sleeve is tailor-made according to your needs. Nearly all lengths and diameters are available. In addition, you can choose several upgrade options.



rotec® Blue Light Sleeve

The benchmark in plate mounting

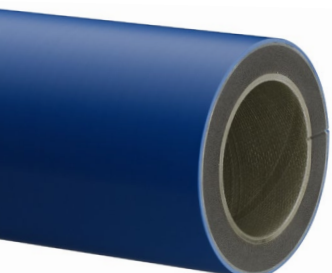
- Superior service life and outstanding durability
- Consistent and long-lasting mounting and clamping characteristics
- Easy and reliable handling



rotec® Smart Sleeve

Next generation polyurethane technology

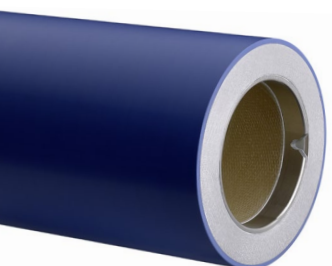
- Weight optimized with up to 30% reduced weight compared to rotec® Blue Light Sleeve
- Newly developed easy-mount technology
- Specialized sleeve construction for bounce reduction and faster press speeds



rotec® Smart Premium Sleeve

rotec® Smart Sleeve with superior dimensional stability

- Weight optimized with up to 25% reduced weight compared to rotec® Blue Light Sleeve
- Constant outer diameter (TIR < 0.02 mm) at fluctuating temperatures or humidity
- Specialized sleeve construction for bounce reduction and faster press speeds



rotec® Lightweight Premium Sleeve

Easier handling with superior dimensional stability

- Up to 50% weight reduction compared to rotec® Blue Light Sleeve
- New lightweight polyurethane intermediate layer
- End plate sleeve edge sealing for long lasting protection



rotec® Compressible Sleeve

Unique compressibility

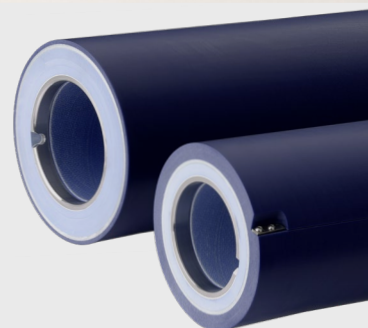
- Long-lasting compressibility, does not collapse with use
- Plate and tape savings, print consistency with long print runs
- Low dot gain, best solid ink density on irregular substrates



rotec® Offset Sleeves

Unique durable construction

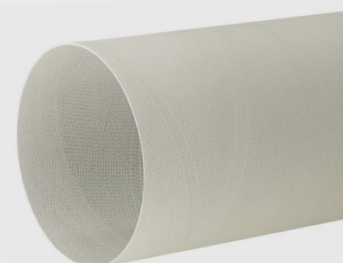
- Offset plate and blanket sleeve set specifically designed for web offset presses
- Allows extremely quick format changes for all repeat sizes
- Highest durability at high temperatures and torque forces
- Perfect resistance to UV inks and solvents



rotec® Base Sleeve

Extremely durable

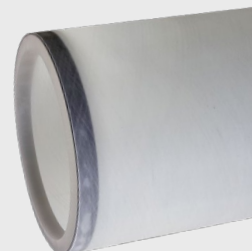
- Optimal stability with low weight for bonding with coating materials
- Robust and durable over long time period
- Fibreglass for perfect bonding characteristics with different coating materials



rotec® Cover Sleeve

Sleeve to protect products with high-end surfaces

- Protection of anilox and other valuable products during storage and transport
- Rubber ring on the end to hold the cover sleeve in place
- Extra long life due to excellent durability



nyloflex® ITR Sleeve

In-the-round ready-to-image photopolymer sleeves available as nyloflex® ITR Thin or nyloflex® ITR Classic

- Combines advantages of Flint Group's dedicated photopolymer plate technology with vast experience in production of sleeves
- Perfect for endless designs and seamless printing
- Several available wall thicknesses to match required job specifications



“

I believe the rotec® Eco Bridge will become the new standard of our industry.

























*- Robert Adler,
Flint Group, Sales Director*



rotec® Adapters

rotec® adapters are high performing products to reduce the wall thickness in order to improve weight and handling of plate mounting sleeves. They are tailor-made according to the customer specifications. Choose a rotec® adapter for bridging diameter differences between air cylinder and sleeve.

- Quick set-up times, easy handling and cost savings
- Innovative air conduction system for easy mounting of sleeves
- Suitable for quick change cantilevered machines and conventional cylinder presses
- Tight tolerances with high-precision grinding (TIR < 0.02 mm) and length according to DIN ISO2768 T1c
- Proven rotec® interior design of synthetic resin and glassfibre compound to ensure long-lasting and consistent mounting characteristics
- Special sizes for wall thickness and length options available upon request

	Wall thickness			
rotec® Bridge Adapter	4.7 mm - 11 mm			
rotec® Unifit Adapter	7.9 mm - 80 mm			 
rotec® Airo Adapter	16 mm - 125 mm			 
rotec® CFX Bridge	16 mm - 125 mm	  		 
rotec® ULW Bridge	30 mm - 125 mm	 		 
rotec® H/C Bridge Adapter	4.7 mm - 11 mm			
rotec® H/C Unifit Adapter	11 mm - 80 mm			
rotec® H/C Airo Adapter	17.5 mm - 125 mm			



Superior Dimensional Stability:

These products provide superior dimensional stability because the adapter construction includes an additional glassfibre barrier layer to prevent any growth.



Lightweight:

These products are an advantage for the press operator by being easier to handle. This comes from reduced weight and easier mounting properties.



High Speed:

These products are ideal for high-speed press applications because the construction and materials of these adapters provide bounce reduction properties.



Compressible:

These products have a compressible outer surface for optimized printability.



Conductive Option:

Available with rotec® Ω Technology that provides complete conductivity from the base sleeve through to the surface. See upgrade section for more information.



Eco Bridge Option

Available as Eco Bridge version, which uses patented air distribution system for significantly easier sleeve mounting. See adapter section for more information.

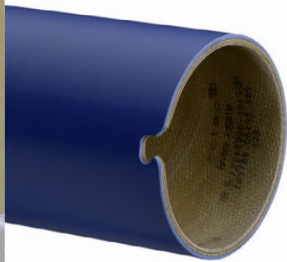
Build Your Own rotec® Adapter

Choose from the different base materials, then add your desired air distribution and air source. Nearly all lengths and diameters are available. In addition, you can choose several upgrade options.

Base Material



Functional base material used in the construction of the adapter to achieve the required characteristics needed for specific press applications

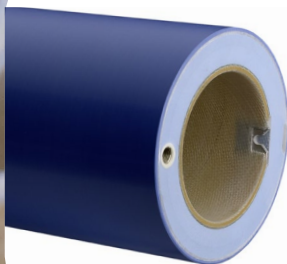


Polyurethane Adapter

rotec® Adapter

The perfect fit for every cylinder configuration

- Standard adapter for the flexographic industry
- High durability and stability
- Several air supply alternatives available to meet press-specific requirements

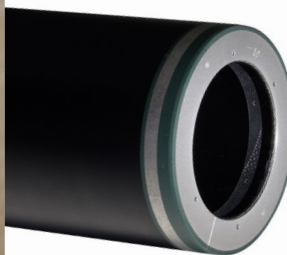


Lightweight Polyurethane Adapter

rotec® ULW Bridge

The ultra-lightweight option for adapters

- Up to 65% weight reduction compared to similar adapters
- Available as Unifit or Airo versions for customised air transfer system
- Application in press or plate-mounting equipment

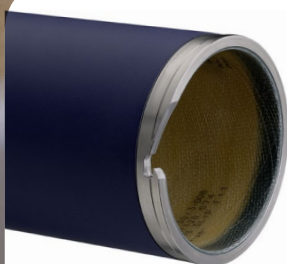


Carbon Fibre Adapter

rotec® CFX Bridge

High modulus carbon fibre adapter for maximum printing performance

- For high printing press speeds and outstanding printing results
- Vibration dampening characteristics due to **high-modulus** carbon fibre structure
- Significantly lighter than conventionally manufactured products – especially with larger wall thicknesses
- Available as Unifit or Airo versions for customised air transfer system



Compressible Adapter

rotec® H/C Adapter

Compressible adapters to mount In-The-Round sleeves

- Exclusive compressible anti-slip surface
- Consistent and long term printing performances especially for long print runs due to bounce-back properties of the compressible surface
- Available with customised air conduction system



Air Distribution



How the air flows out of the adapter, in order to mount the sleeve

Standard Air Holes



4-8 air holes on operator side, additional holes along the length of the adapter

Eco Bridge – breathable metal ring



Breathable metal ring along the entire circumference of the adapter on the operator side. Eco Bridge can be used with an Airo or Unifit Air Source and no additional air holes are typically needed along the length of the adapter.

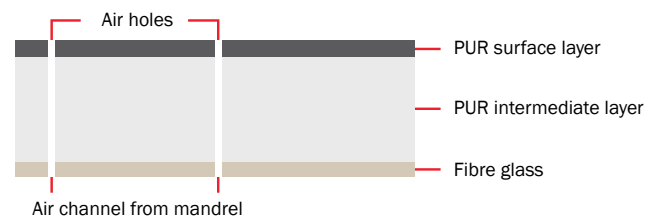
- Up to 90% less compressed air needed for easy sleeve mounting
- 99% reduction in noise
- Increased efficiency for cost savings and improved productivity

Air Source

How the air flows into the adapter

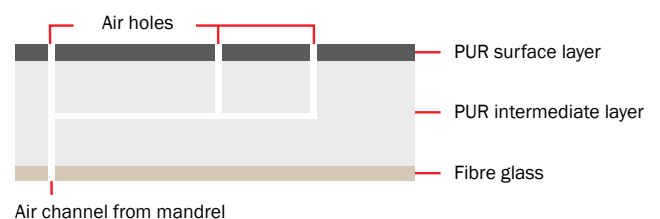
Bridge

For wall thicknesses below 10 mm. Conducts air from the air cylinder to the surface via air holes.



Unifit

Customised air transfer system for most types of air cylinders. In the Eco Bridge version, the air holes are replaced by a breathable metal ring on the operator side.



Airo

Dedicated external air connection system. In the Eco Bridge version, the air holes are replaced by a breathable metal ring on the operator side.



Upgrade Your Own rotec® Sleeve or Adapter

Need something more than the standard rotec® products?

Let's upgrade you!

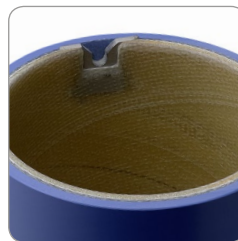
Flint Group has several high-quality upgrade options to customise your sleeves and adapters for your individual press and job specifications. If you can imagine it, we will do everything we can to make it happen. With years of experience, we are able to provide excellent solutions for most all needs and requirements. Each sleeve and adapter is configured new for each order, just for you!

Notch Options

- Ensure safe and accurate positioning of the rotec® sleeves or adapters on the air cylinder
- Notch type options:
 - grinded notch, metal -reinforced notch
- Standard and interlock shapes available in most all standard sizes



Grinded Notch



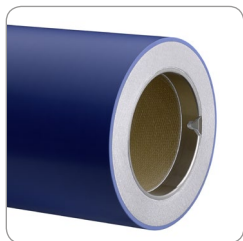
Metal-reinforced Notch



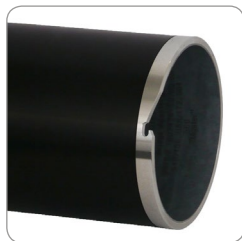
Interlock Notch

Ring Options

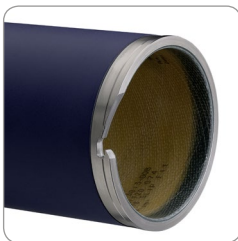
- Ensure safe and accurate positioning of the rotec® sleeves and adapters and provide extra protection of the base sleeve edge
- Material options: stainless steel and polyurethane
- Outer ring with end stop used to mount ITR sleeves
- Polyurethane outer ring for extra protection of rotec® Compressible Sleeve edge
- Pull ring used for heavy sleeves, especially offset



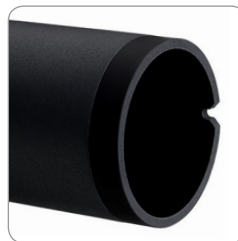
Inner Ring - Stainless Steel



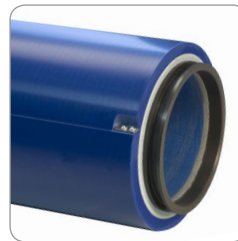
Outer Ring - Stainless Steel



Outer Ring with End Stop



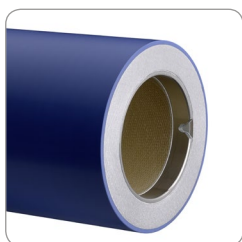
Outer Ring - Polyurethane



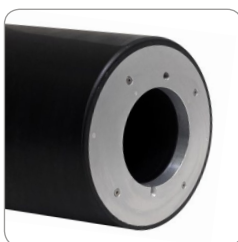
Pull Ring

End Plates & End Stop

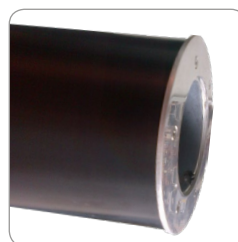
- Aluminium end plates protect the edge of the sleeve
- Airo end plate includes external air connection valve
- End stop used to mount sleeves without notches
- Soft stop used to mount ITR sleeves



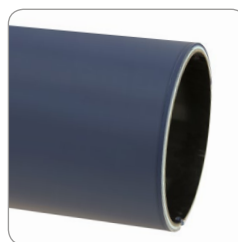
End Plate



Airo End Plate



End Plate with End Stop



Soft Stop

Why is conductivity needed?

Grounding all parts of the printing press, including the sleeves and adapters, prevents fires and explosions. This is primarily a danger when using solvent-based inks with a flash point below 55°C.

How is rotec® Ω Technology for conductivity better than alternatives?

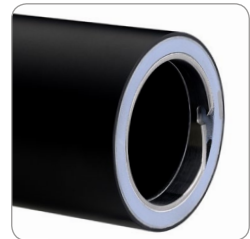
The rotec® Ω Technology provides conductivity from the base sleeve through to the surface. Alternative conductive sleeves and adapters often have only a spring-mounted ball bearing grounding only the conductive surface of the product to the press's air cylinder. If the spring breaks or the surface is compromised, this sleeve would no longer be conductive.

10-year warranty:

The rotec® Ω Technology offers a 10-year warranty for conductivity because there are no parts to wear out. The sleeve or adapter will maintain conductivity.

Conductivity: rotec® Ω Technology

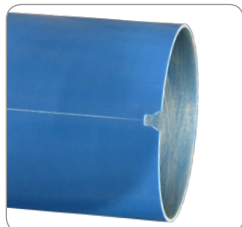
- 10-year warranty for conductivity
- Complete conductivity of the inner construction through to the surface makes it the safest product on the market
- Complies with the regulations of ATEX EU Directive No. 2014/34/EU (formerly ATEX 95) for electrostatic derivation ability



rotec® Ω Technology

Registration Tools

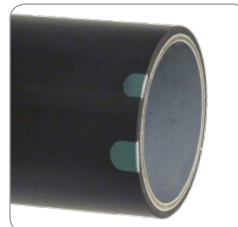
- Registration tools aid in faster mounting and print job set-up for increased press productivity
- Scribe lines, register pin, registration systems with GPS/RFID



Scribe Line



Register Pin



Registration System



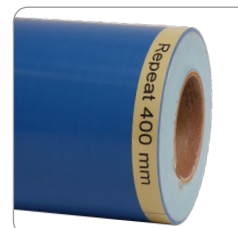
Registration Label

Labeling and Other Tools

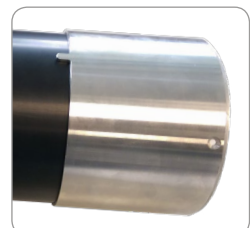
- Labeling indicates important sleeve specifications
- Spacer allows shorter sleeves to be mounted and centered



Laser Engraving



Label Strip



Spacer

Flint Group Key Facts

Flint Group was built around the vision to be a **solution provider** to the printing and packaging industry. The execution of our vision resulted in an unmatched portfolio covering **all steps of the value chain for printing** in the packaging industry.

To illustrate that further, picture a Flint Group Factory, for example, for the label market. From imagers, flexographic and letterpress printing plates and equipment, mounting sleeves and adapters for printing presses to inks and digital printing solutions, Flint Group covers all the steps of the value chain for printing in this factory.

Flint Group in numbers

7,500

Flint Group Employees

180 
sites
across 40 Countries on all continents



1,630

Raw Material Suppliers

5,580

Raw Materials

over 150,000

Unique Customer Formulations

almost 20,000

Direct customers and many more through our extensive distributor network

Revenue 2017

€2.10
billion

over

600
million kg

of ink products (1,340 million lb)

4.000.000 m²

of plates and blankets
(43 million square feet)

Unmatched Portfolio for the Packaging Industry

Flint Group Image Transfer Solutions offers an unmatched product line for the packaging industry. Ranging from nyloflex® and nyloprint® printing plates and equipment, rotec® sleeves and adapters to Day products for the offset market. From a market perspective all products and services are key

elements of **transferring an image onto a substrate** and enable us to create a portfolio of high performance, engineered materials used in pre-press and printing operations that provide consistent quality and technology to help our customers create value in their markets.

rotec®

Sleeves and Adapters



dayGraphica®

Offset Blankets and Sleeves



ThermoFlexX

Digital Imaging
for Flexo and Letterpress



nylosolv®

Washout Solvents



nyloflex®

Flexo Printing Plates for

- Flexible Packaging
- Tags and Labels
- Corrugated

Thermal and solvent plates

Flat Top Dot technology

Processing Equipment

Ready-to-image ITR Sleeves



nyloprint®

Printing Plates for

- Letterpress
- Pad Printing
- Tubes, Cups and Cans Printing
- Special Applications

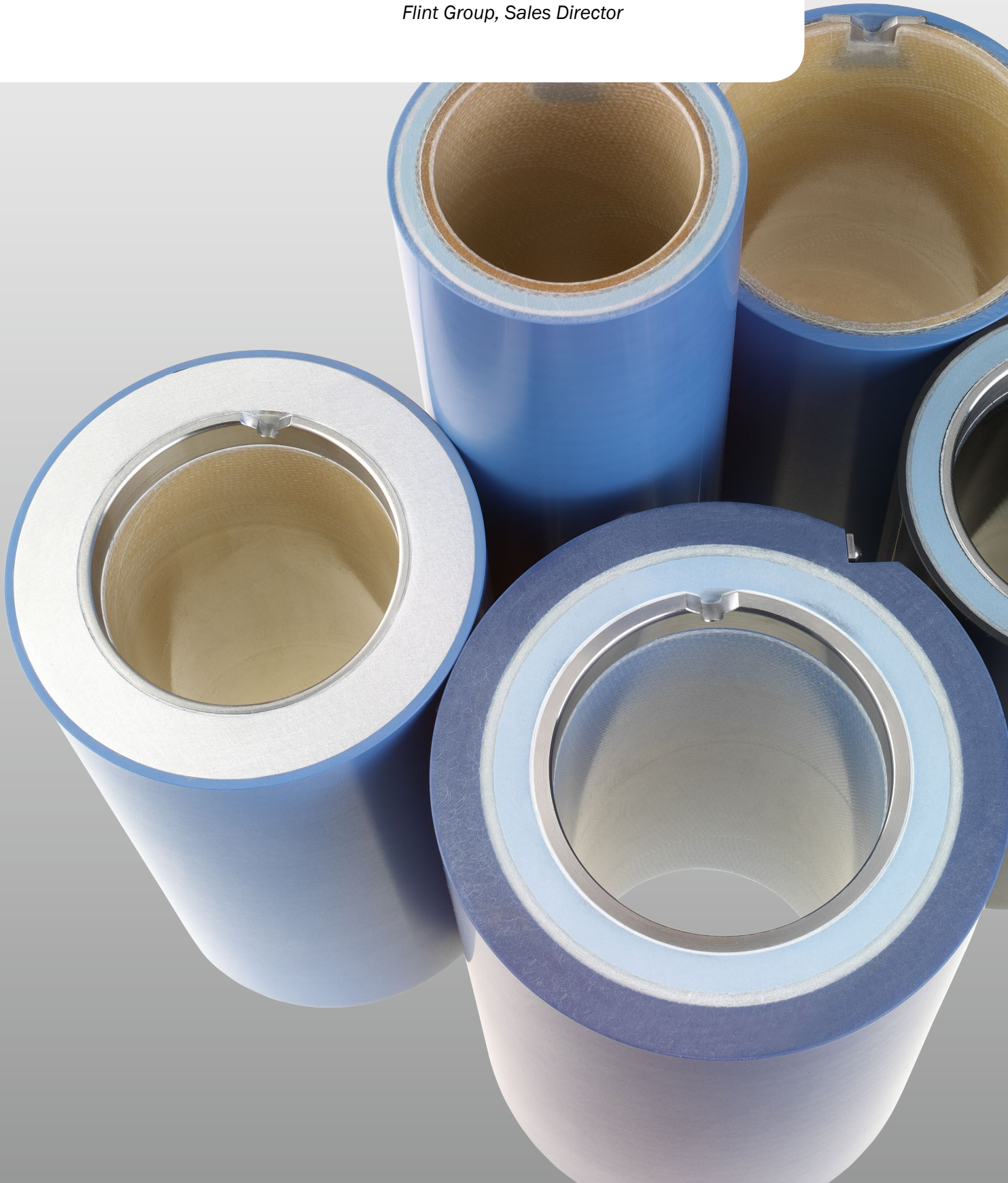
Processing Equipment





*Global production of rotec® sleeves and adapters
make the variety and possibilities for our customers
virtually endless.*

*- Patrick Lüdecke,
Flint Group, Sales Director*





www.flintgrp.com

Please contact Customer Service for further information.

Flint Group
Solmsstraße 83
48683 Ahaus
Germany

Tel.: +49 2561 9826-801
Fax: +49 2561 9826-789
info.flexo@flintgrp.com
www.flintgrp.com

The aim of our technical documents is to inform and advise our customers. The information provided herein is correct to the best of Flint Group's knowledge. No liability for any errors, facts or opinions is accepted. Customers must satisfy themselves as to the suitability of this product for their application. No responsibility for any loss as a result of any person placing reliance on any material contained herein will be accepted. Product names followed by ® are trademarks registered by Flint Group (represented by Flint Group US LLC or Flint Group Germany GmbH).